
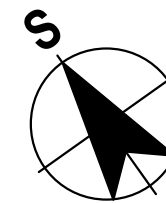
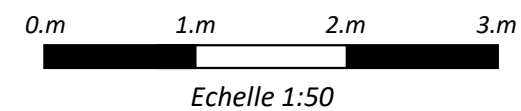


 Faux plafond

 Collecteur chauffage + sanitaires

Plan susceptible de modifications en fonction des études techniques



24, avenue Robert Schuman
57000 Metz
Tel: 03 87 18 37 20

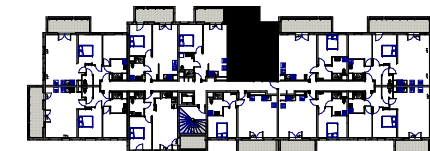


Logements collectifs - BOTANIK

ZAC du Sansonnet - METZ

NIVEAU	TYPE	LOGEMENT
R+2	T2	A26

SITUATION



DETAIL DES SURFACES

SEJOUR/CUISINE	22.50 m ²
CHAMBRE	12.25 m ²
SDB	5.30 m ²
ENTREE	3.80 m ²
PL	0.85 m ²
Surface habitable	44.70 m²

BALCON DALLE	8.05 m²
Surface extérieure	8.05 m²

INDICE	C	DATE	29.09.23
--------	----------	------	-----------------